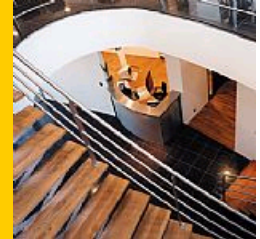




# CMB-P1016V-HB1

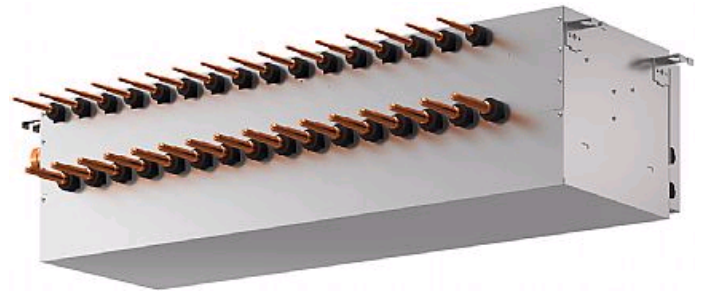
Slave BC Controller

R410A



At the heart of both the R2 and WR2 Series, the BC Controller makes simultaneous heating and cooling possible. It has the inherent 'intelligence' to be the system's decision-maker.

- **New brazed connections**
- **Transfers energy around the system, drawing on energy from the heat source units/outdoor units**
- **Directing energy as requested by the individual indoor units**
- **Instructs the heat source unit/outdoor unit on the amount of refrigerant (liquid or gas) that is required to achieve the requested cooling or heating requirements**
- **Allows unique 2-pipe heat recovery**
- **HIC Circuit for improved efficiency**



Pictures not to scale

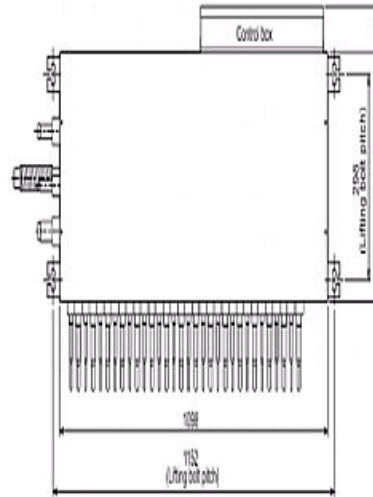
## Product Details

CMB-P1016V-HB1	
Number of Connections	16
Power Input (kW) Heating (Nominal)	0.301
Power Input (kW) Cooling (Nominal)	0.301
Width - mm	1098
Depth - mm	432
Height - mm	284
Weight - kg	55
Electrical Supply	220-240v, 50Hz
Phase	Single
Mains Cable No. Cores	3
Running Current (A) - Heating	1.26
Running Current (A) - Cooling	1.26
Fuse Rating (BS88) - HRC (A)	6

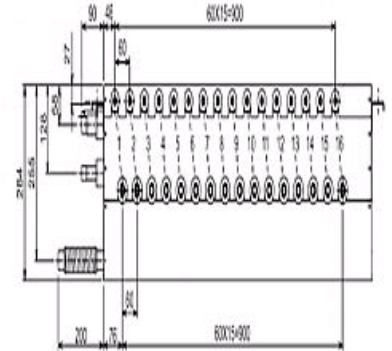
## Dimensions

CMB-P1016V-HB1

Upper View >



Side View >



Telephone: 01707 282880

Email: [air.conditioning@meuk.mee.com](mailto:air.conditioning@meuk.mee.com) Website: <http://www.mitsubishielectric.co.uk/aircon>

**CELSIUS AIR CONDITIONING LTD**  
**1, WELL STREET**  
**HEYWOOD**  
**OL10 1NT**  
**Tel: 01706 367500**  
**Fax: 01706 367355**

Mitsubishi Electric reserves the right to make any variation in technical specification to the equipment described, or to withdraw or replace products without prior notification or public announcement.

