



Celsius

air conditioning



PLA-RP125BA2

Zubadan Inverter Heat Pump

R410A 4-Way Blow Ceiling Cassette System

The new Mr Slim Zubadan Inverter heat pumps achieve an excellent heating performance even when the outdoor air temperature is as low as -25 degrees C.

- **Airflow controllable for ceiling heights up to 4.2m, with automatic adjustment of fan speed**
- **Reduced draft air distribution, with independent vane control**
- **Filter lowering operation down to 4m (optional PLP-6BAJ grille required)**
- **Optional 'I See Sensor' for energy saving and smooth temperature control throughout the room**



Pictures not to scale

Product Details

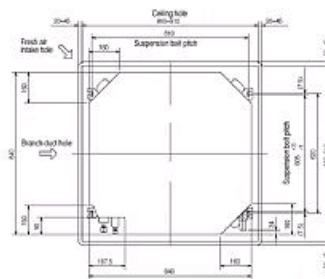
| PLA-RP125BA2 Indoor Unit | |
|---|----------------------|
| Capacity (kW): | |
| Heating (Nominal) (Low - High) | 14.00 (5.00 - 16.00) |
| Cooling (Nominal) (Low - High) | 12.50 (5.50 - 14.00) |
| Heating (UK) (Low - High) | 13.85 (4.95 - 15.85) |
| Cooling (UK) (Low - High) | 11.50 (5.05 - 12.90) |
| SHF R410A (Nominal) | 0.71 |
| COP / EER (Nominal) | 3.92 / 3.3 |
| Energy Label Heating / Cooling | A / A |
| Width (grille) - mm | 840 (950) |
| Depth (grille) - mm | 840 (950) |
| Height (grille) - mm | 298 (35) |
| Weight (grille) - kg | 27 (6) |
| Airflow (m ³ /min) - Lo-Mi1-Mi2-Hi | 22-25-28-31 |
| Noise (dBA) - Lo-Mi1-Mi2-Hi | 34-36-39-41 |
| Pipe Size Gas mm (in) | 15.88 (5/8) |
| Pipe Size Liquid mm (in) | 9.52 (3/8) |
| Electrical Supply | Fed by Outdoor Unit |
| Phase | Single |
| Fuse Rating (BS88) - HRC (A) | 6 |
| Interconnecting Cable No. Cores | 4 |
| Grille Ref | PLP-6BA GRILLE |

| PUHZ-HRP125YHA2 Outdoor Unit | |
|---|----------------|
| Width - mm | 950 |
| Depth - mm | 330+30 |
| Height - mm | 1350 |
| Weight - kg | 134 |
| Noise (dBA) (Heating /Cooling) - Lo-Hi | 52 /48-51 |
| Electrical Supply | 380-415v, 50Hz |
| Phase | 3 |
| Fuse Rating (BS88) - HRC (A) | 16 |
| SystemPower Input (kW) - Heating (Nominal) | 3.57 |
| SystemPower Input (kW) - Cooling (Nominal) | 3.79 |
| SystemPower Input (kW) - Heating (UK) | 5.18 |
| SystemPower Input (kW) - Cooling (UK) | 3.22 |
| Starting Current (A) | 3 |
| SystemRunning Current (A) - Heating / Cooling | 6.37 / 6.7 |
| Mains Cable No. Cores | 5 |
| Max Pipe Length (m) | 75 |
| Max Height Difference (m) | 30 |
| Charge (kg) - 30m | 5.5 |

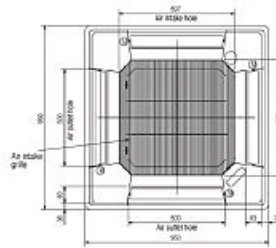
Dimensions

PLA-RP125BA2

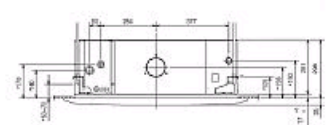
Upper View >



Front View >

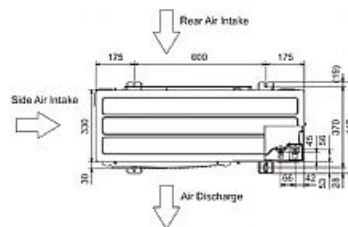


Side View >

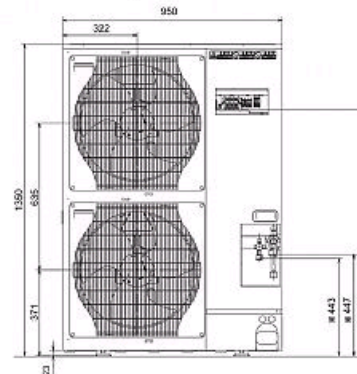


PUHZ-HRP125YHA2

Upper View >



Front View >



Right Side View >



Telephone: 01707 282880

Email: air.conditioning@meuk.mee.com Website: <http://www.mitsubishielectric.co.uk/aircon>

CELSIUS AIR CONDITIONING LTD

1, WELL STREET

HEYWOOD

OL10 1NT

Tel: 01706 367500

Fax: 01706 367355



Mitsubishi Electric reserves the right to make any variation in technical specification to the equipment described, or to withdraw or replace products without prior notification or public announcement.